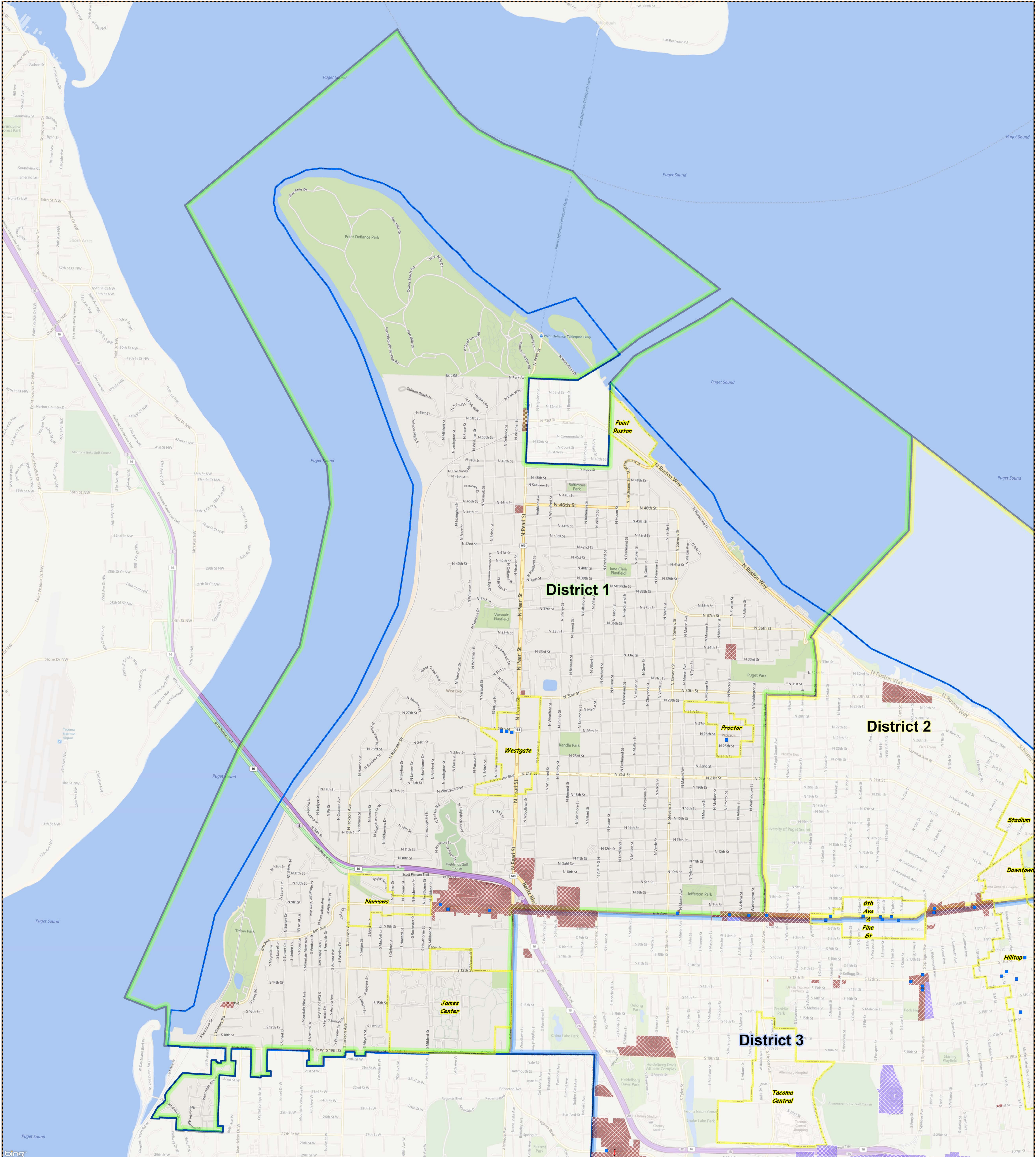


Status-Quo Regulatory (500')

City of Tacoma By Councilmanic District

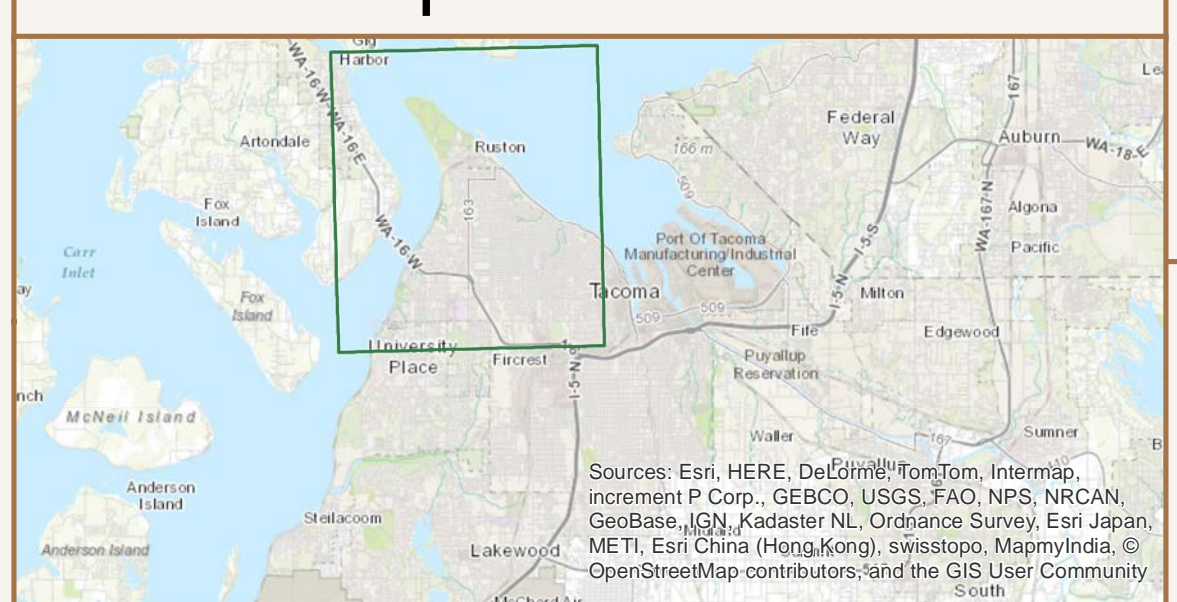
District: 1



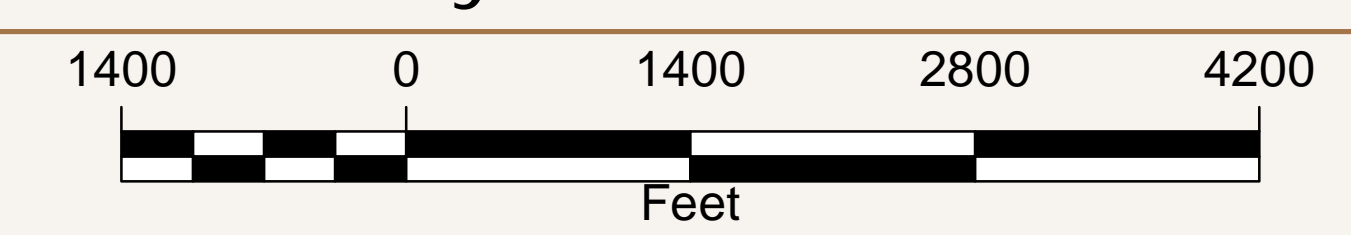
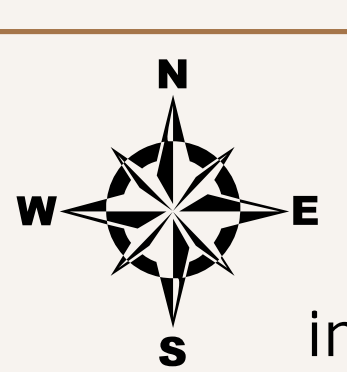
- Conforming Billboards (37)
- Non-conforming Billboards (274)
- Arterials Available (500' - 10.6 total miles)
- Commercial (C2 - 2 billboards, 0.2 miles available)
- Industrial (M1; M2; PMI - 35 billboards, 10.4 miles available)
- Buffer Area within Inclusion Zone (500')
- Mixed Use Centers

This map represents a preliminary analysis of the proposed buffering standards. It is not 100% accurate and is subject to further review and refinement. Verification of the availability of a particular site may necessitate more detailed analysis to ensure the accurate location of buffered uses in the particular area.

Map Location



City of Tacoma
Community & Economic Development Department
GIS Analysis & Data Services



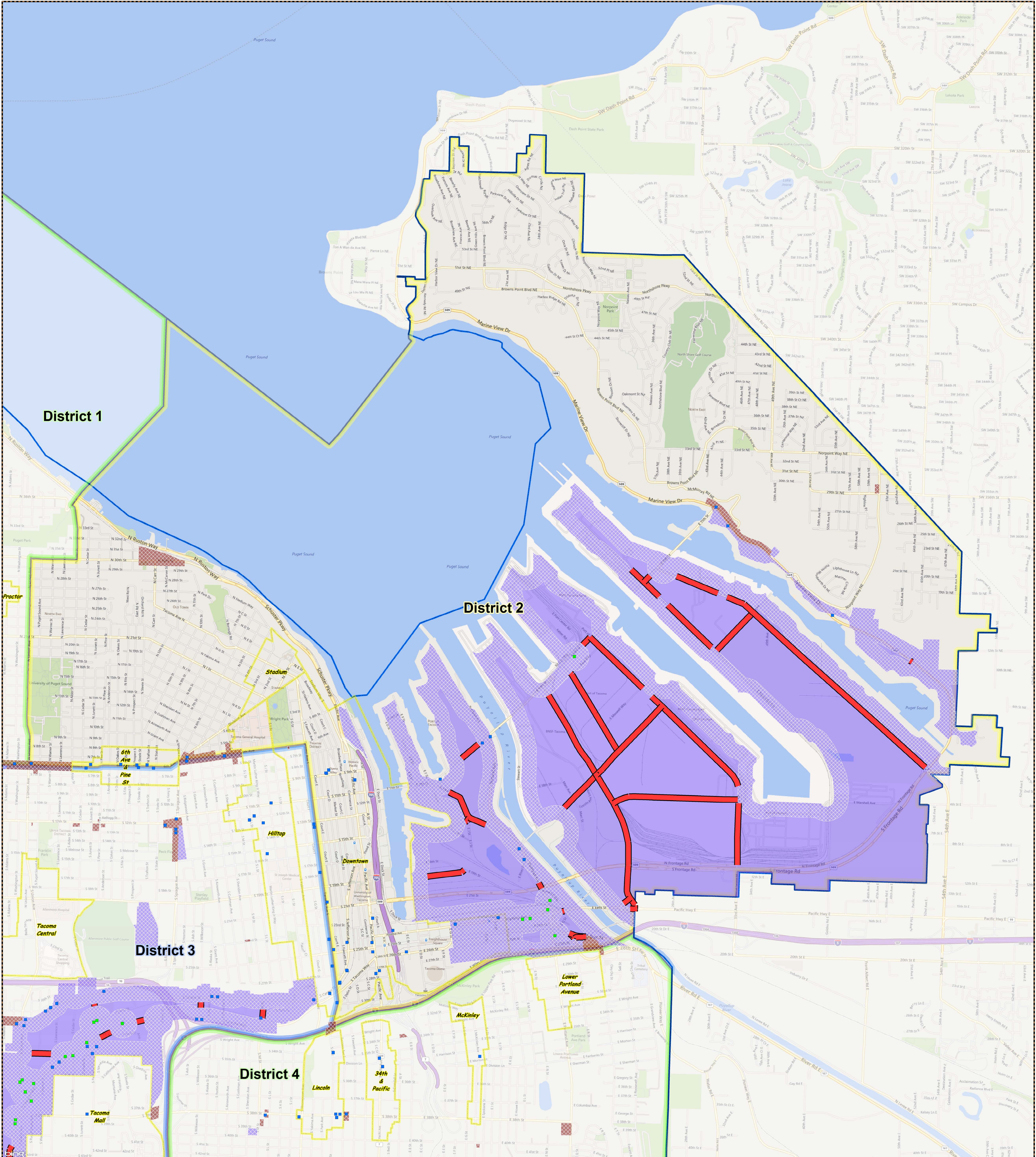
This drawing is neither a legally recorded map nor a survey and is not intended to be used as one. It is to be used for reference purposes only.



Status-Quo Regulatory (500')

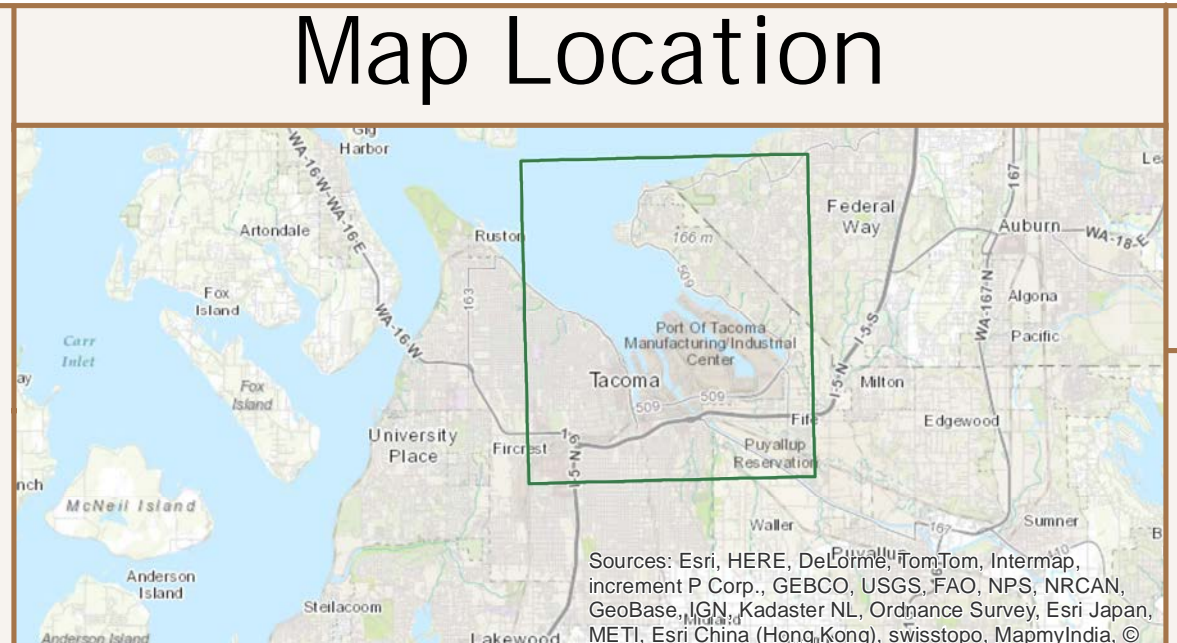
City of Tacoma By Councilmanic District

District: 2



- Conforming Billboards (37)
- Non-conforming Billboards (274)
- Arterials Available (500' - 10.6 total miles)
- Commercial (C2 - 2 billboards, 0.2 miles available)
- Industrial (M1; M2; PMI - 35 billboards, 10.4 miles available)
- Buffer Area within Inclusion Zone (500')
- Mixed Use Centers

This map represents a preliminary analysis of the proposed buffering standards. It is not 100% accurate and is subject to further review and refinement. Verification of the availability of a particular site may necessitate more detailed analysis to ensure the accurate location of buffered uses in the particular area.



City of Tacoma
Community & Economic Development Department
GIS Analysis & Data Services

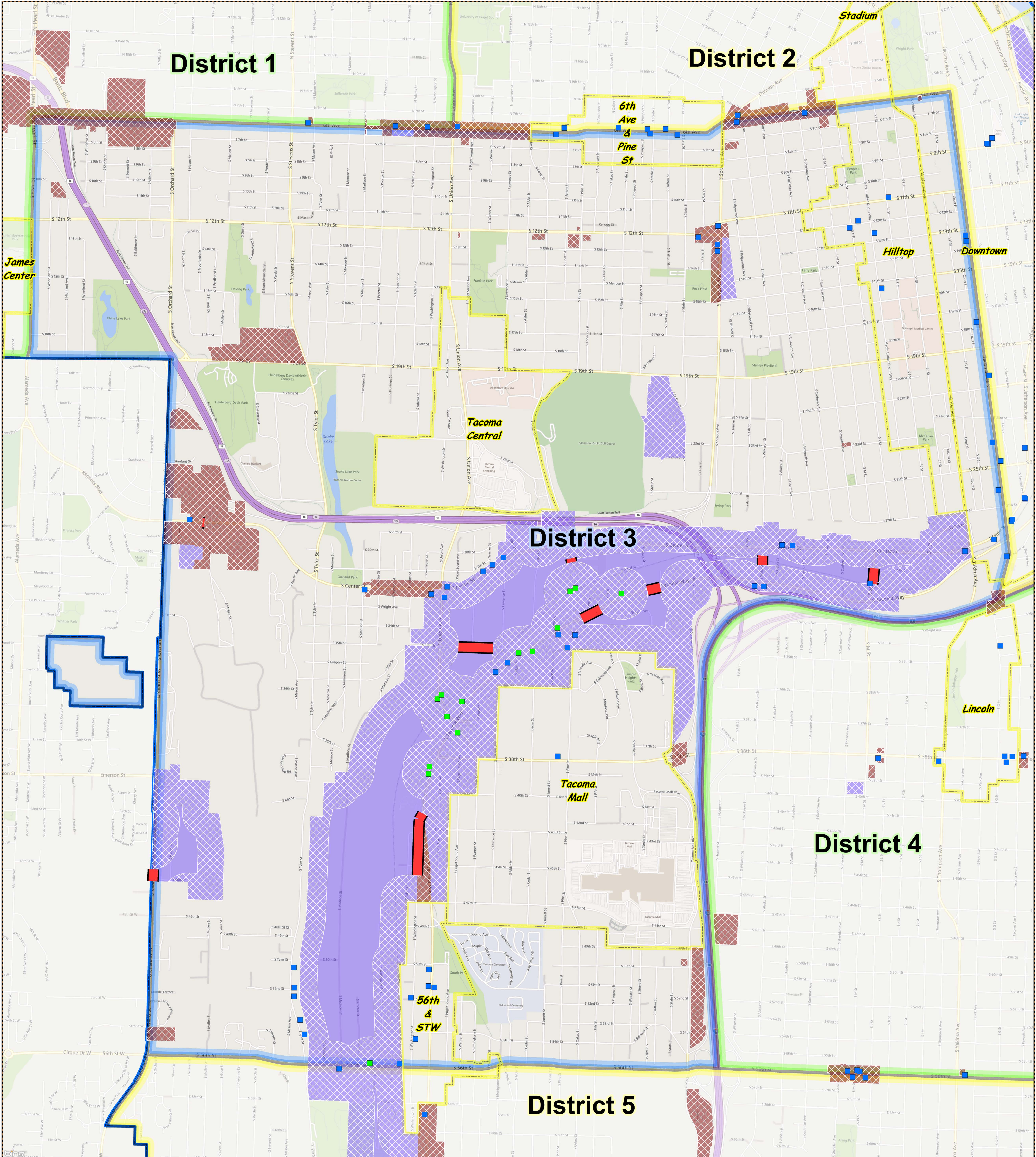
1500 0 1500 3000 4500
Feet

This drawing is neither a legally recorded map nor a survey and is not intended to be used as one. It is to be used for reference purposes only.

Status-Quo Regulatory (500')

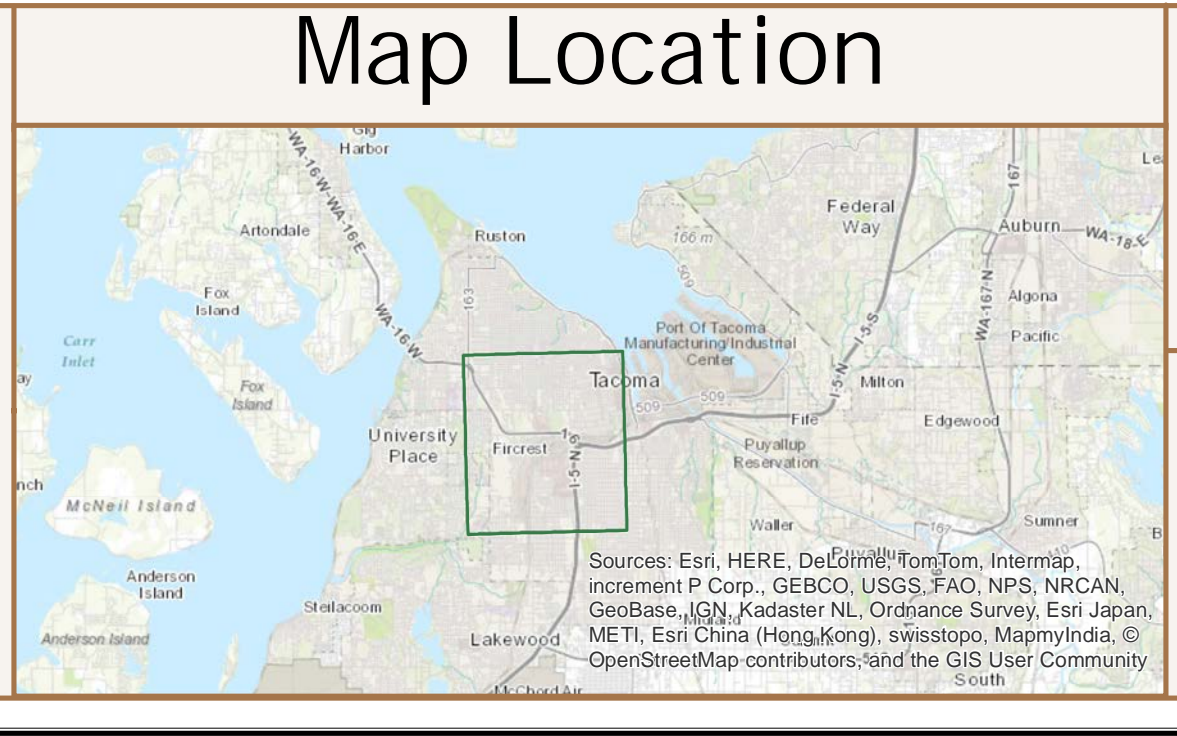
City of Tacoma By Councilmanic District

District: 3



- Conforming Billboards (37)
- Non-conforming Billboards (274)
- Arterials Available (500' - 10.6 total miles)
- Commercial (C2 - 2 billboards, 0.2 miles available)
- Industrial (M1; M2; PMI - 35 billboards, 10.4 miles available)
- Buffer Area within Inclusion Zone (500')
- Mixed Use Centers

This map represents a preliminary analysis of the proposed buffering standards. It is not 100% accurate and is subject to further review and refinement. Verification of the availability of a particular site may necessitate more detailed analysis to ensure the accurate location of buffered uses in the particular area.



City of Tacoma
Community & Economic Development Department
GIS Analysis & Data Services

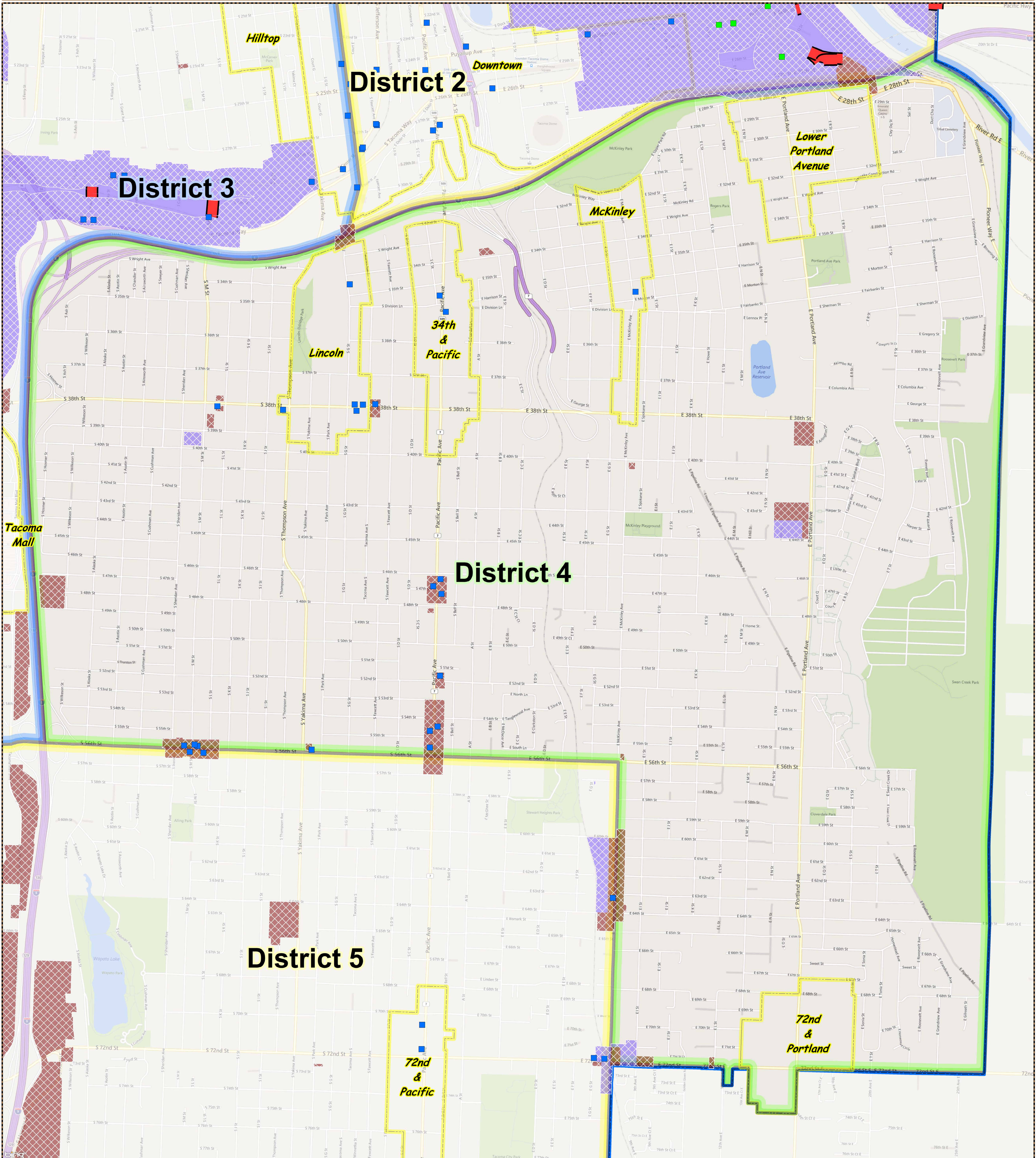
880 0 880 1760 2640
Feet

This drawing is neither a legally recorded map nor a survey and is not intended to be used as one. It is to be used for reference purposes only.

Status-Quo Regulatory (500')

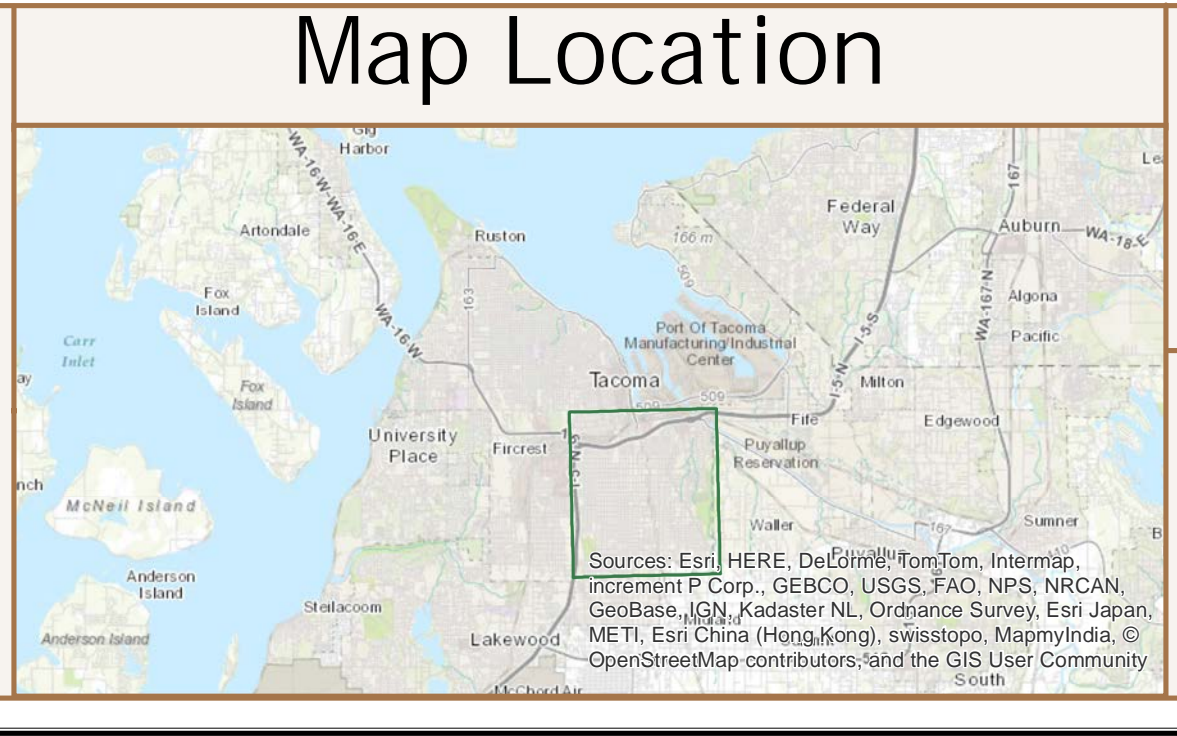
City of Tacoma By Councilmanic District

District: 4



- Conforming Billboards (37)
- Non-conforming Billboards (274)
- Arterials Available (500' - 10.6 total miles)
- Commercial (C2 - 2 billboards, 0.2 miles available)
- Industrial (M1; M2; PMI - 35 billboards, 10.4 miles available)
- Buffer Area within Inclusion Zone (500')
- Mixed Use Centers

This map represents a preliminary analysis of the proposed buffering standards. It is not 100% accurate and is subject to further review and refinement. Verification of the availability of a particular site may necessitate more detailed analysis to ensure the accurate location of buffered uses in the particular area.



City of Tacoma
Community & Economic Development Department
GIS Analysis & Data Services

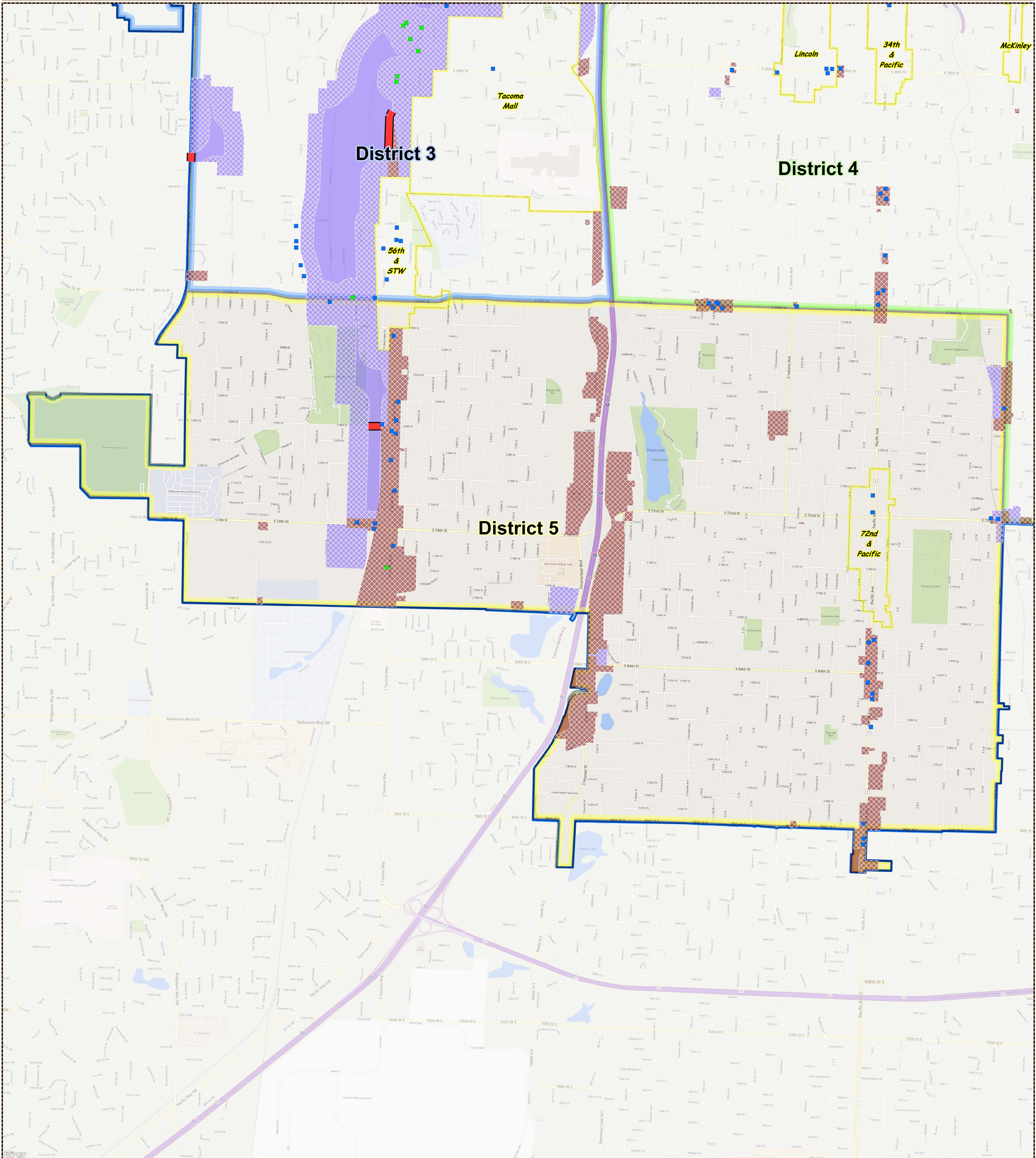
820 0 820 1640 2460
Feet

This drawing is neither a legally recorded map nor a survey and is not intended to be used as one. It is to be used for reference purposes only.

Status-Quo Regulatory (500')

City of Tacoma By Councilmanic District

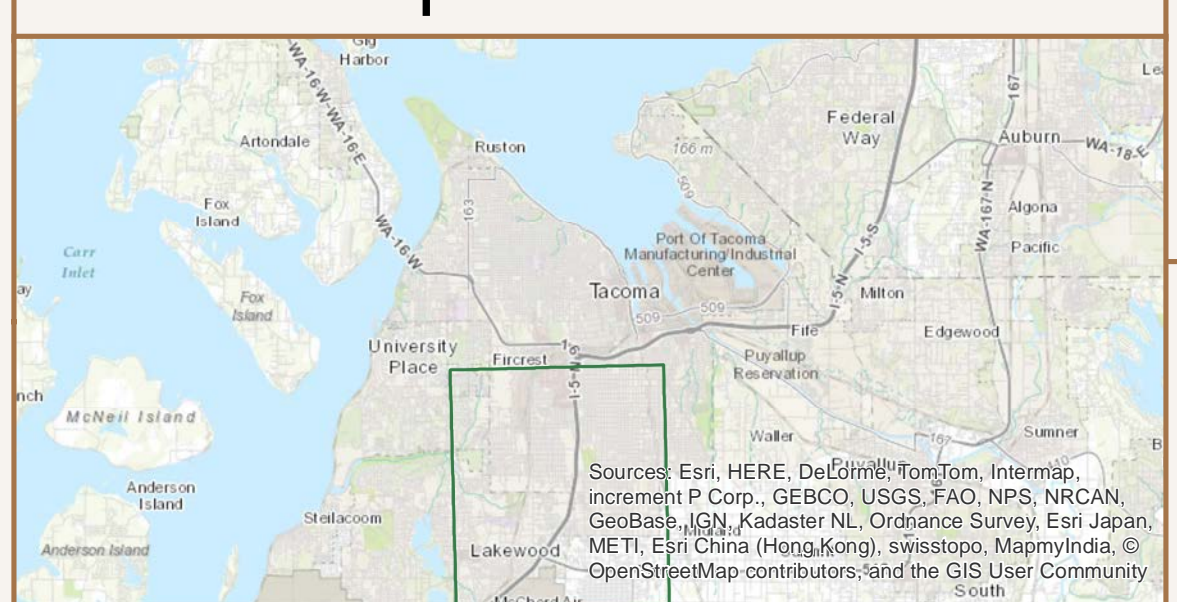
District: 5



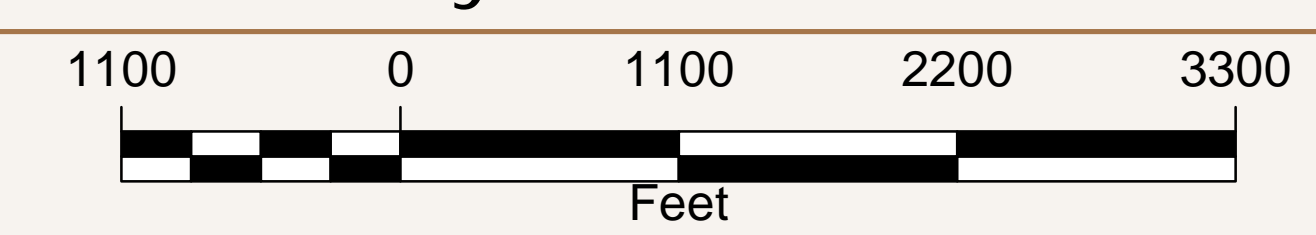
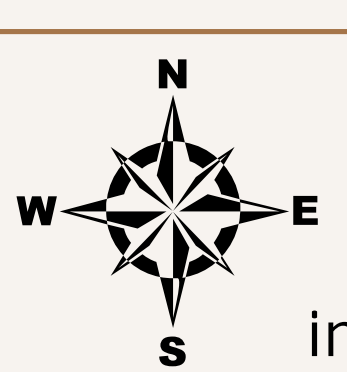
- Conforming Billboards (37)
- Non-conforming Billboards (274)
- Arterials Available (500' - 10.6 total miles)
- Commercial (C2 - 2 billboards, 0.2 miles available)
- Industrial (M1; M2; PMI - 35 billboards, 10.4 miles available)
- Buffer Area within Inclusion Zone (500')
- Mixed Use Centers

This map represents a preliminary analysis of the proposed buffering standards. It is not 100% accurate and is subject to further review and refinement. Verification of the availability of a particular site may necessitate more detailed analysis to ensure the accurate location of buffered uses in the particular area.

Map Location



City of Tacoma
Community & Economic Development Department
GIS Analysis & Data Services



This drawing is neither a legally recorded map nor a survey and is not intended to be used as one. It is to be used for reference purposes only.

